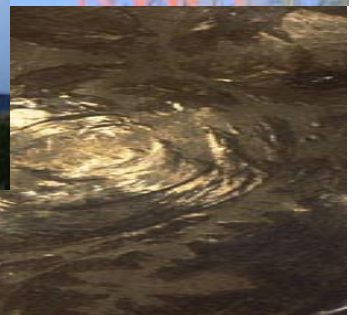
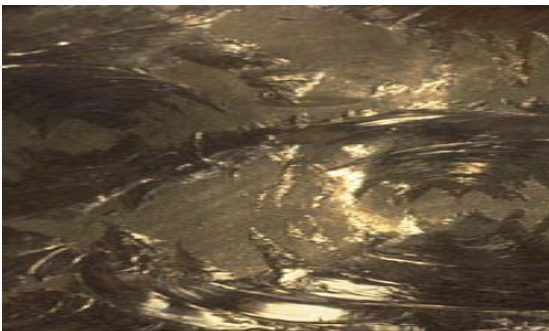


Environmental Quiz

A SHARED VISION



QUIZ QUESTIONS - ECOLOGY

1. **A 'habitat' is:**
 - A. A place to buy furniture and furnishings
 - B. The same as an ecosystem
 - C. A particular area inhabited by plants and animals
 - D. The number of different organisms living in a specific area.

2. **How an organism is suited to live in a particular place is called:**
 - A. Competition
 - B. Adaptation
 - C. Addition
 - D. Participation

3. **'Biodiversity' is described as:**
 - A. The range of different species in an environment
 - B. The seasonal and daily changes in an environment
 - C. The way species differ from one another
 - D. The influence of physical factors on an environment

4. **Which of these is a correct food chain?**
 - A. Fish→chips→peas
 - B. Man→cow→grass
 - C. Cow→farm→supermarket
 - D. Grass→cow→man

5. **The arrows in a food chain show:**
 - A. Who eats who
 - B. The route of food to the shops
 - C. The movement of energy between organisms
 - D. Where you need to go to get a meal

6. **All the energy in a food chain originates from:**
 - A. A plant
 - B. The farmer
 - C. The sun
 - D. An electric socket

7. **Weeds compete with crops for resources. Farmers can get rid of weeds by using:**
 - A. Insecticide
 - B. Fungicide
 - C. Herbicide
 - D. Rodenticide

8. **Which of the following statements about pesticides is true:**
 - A. Spraying pesticides only affects the farmer's crops
 - B. They do not affect food chains
 - C. Without pesticides farmers could not grow crops
 - D. Pesticides can end up in rivers and streams

9. **Organic food is supposed to be better for you because:**
 - A. It relies on chemicals to improve the flavour
 - B. It is more expensive to buy
 - C. It is all grown in glasshouse, keeping it clean of environmental pollutants
 - D. It is grown without the use of artificial fertilisers and pesticides

10. **The biggest impacts are made on the environment by:**
- A. The migration of organisms
 - B. Preditation
 - C. Human interference
 - D. Competition
11. **Sustainable development is:**
- A. New building work to maintain jobs
 - B. Just a phrase used by environmentalists
 - C. Typical 21st century farming methods
 - D. Improving the lives of today's people, without damaging the quality of life of future generations.
12. **Farming crisis and food scares arise because:**
- A. Animals are dirty
 - B. Some people do not cook their food properly
 - C. Man has interfered too much with natural food production
 - D. We eat too much fast food
13. **The Rio declaration on the Environment and Development and Agenda 21 encouraged people to:**
- A. Act local, think global
 - B. Act global, think local
 - C. Act as we are, think as we do
 - D. Not worry, the earth will go on forever

QUIZ QUESTIONS - ENERGY

1. **The ultimate energy source for the Earth is:**
- A. Electricity
 - B. Natural Gas
 - C. The Sun
 - D. Plants
2. **Fossil fuels are made:**
- A. From skeletons
 - B. In factories
 - C. Over millions of years
 - D. Over a barbecue
3. **A non-renewable energy resource:**
- A. Can be plugged in and recharged
 - B. Will eventually run out
 - C. Will not work for new appliances
 - D. Can be used over again
4. **The remains of dead sea creatures have made:**
- A. Coal
 - B. Oil
 - C. Nice earrings
 - D. Salt

- 5. At the moment renewable energy resources generate:**
- A. More energy than fossil fuels
 - B. The same amount of energy as fossil fuels
 - C. Less energy than fossil fuels
 - D. Virtually no energy
- 6. Which of these statements can be used to describe renewable energy?**
- A. They will run out
 - B. They pollute the environment
 - C. Most renewable energy resources do not need burning
 - D. They all use the power of the Sun
- 7. Some people object to wind turbines because:**
- A. They do not like windmills
 - B. They get in the way of photographs
 - C. Wind farms are not real farms
 - D. They are often built in areas of natural beauty
- 8. A scientist has come up with a plan to pump water inside the Earth. He thinks that this is a good idea because.**
- A. There is too much water on the Earth's surface and we need more land
 - B. It will combat the rising sea levels caused by global warming
 - C. It will cool down volcanoes which could erupt
 - D. Mining has left big holds underground that may unbalance the Earth's orbit
- 9. Nuclear fuel is:**
- A. Non-renewable
 - B. Renewable
 - C. Burnt
 - D. Environmentally friendly
- 10. Humans get their own energy from:**
- A. Coal
 - B. Waves
 - C. Food
 - D. A socket
- 11. Energy is measured in:**
- A. Newtons
 - B. Pascals
 - C. Joules
 - D. Grammes
- 12. The energy humans get from food originally comes from:**
- A. Sugar
 - B. Meat
 - C. Vegetables
 - D. The sun
- 13. There are many places where wave energy can be produced. The best place to generate energy from waves is:**
- A. The sea
 - B. A reservoir
 - C. A big river
 - D. A lake

14. **People object to the burning of fossil fuels because:**
- A. Not everyone has an open fire
 - B. They release polluting gases
 - C. They are cheap
 - D. They produce a lot of money
15. **If we continue to use fossil fuels at the current rate, they will run out. If they run out, which of these products will we still be able to produce:**
- A. petrol
 - B. Diesel
 - C. Plastics
 - D. Electricity

QUIZ QUESTIONS - ENVIRONMENTAL CHEMISTRY

1. **The earth does not directly provide which of man's basic needs?**
- A. Water
 - B. Air
 - C. Food
 - D. Shelter
2. **Which of these is not released from burning fossil fuels?**
- A. Carbon dioxide
 - B. Sulphur dioxide
 - C. Copper oxide
 - D. Nitrogen oxides
3. **Dissolved pollutant gasses can form:**
- A. Ozone
 - B. Acid rain
 - C. Alkali snow
 - D. Neutral hail
4. **The death of Scandinavian forests was blamed on:**
- A. Pollution from UK power station
 - B. Pollution from Scandinavian power stations
 - C. Tree surgeons
 - D. The Chernobyl disaster
5. **Acid rain does not cause:**
- A. Lakes with a very low pH
 - B. Erosion of limestone and marble
 - C. Damage to trees
 - D. Global warming
6. **Sulphur dioxide levels can be reduced by using:**
- A. Catalytic converters
 - B. Static electricity to attract it in factory chimneys
 - C. More efficient car engines
 - D. Low sulphur fuels
7. **Which of these atmospheric pollutants is not released by car exhausts?**
- A. Carbon monoxide
 - B. Carbon dioxide
 - C. Magnesium oxide
 - D. Lead oxide

- 8. Unleaded paint and petrol were introduced because:**
- A. European Parliament told us to
 - B. Lead was proven to affect the brain and cause mental impairment
 - C. It was cheaper to produce than leaded products
 - D. Unleaded petrol made cars go faster
- 9. Which of these is not caused/aggravated by atmospheric pollution?**
- A. Asthma
 - B. Nice sunsets
 - C. Hayfever
 - D. Global warming
- 10. The greenhouse effect is where:**
- A. Heat energy is trapped by the atmosphere
 - B. Too many buildings are built from glass
 - C. Solar panels are attached to the roofs of houses
 - D. You take gardening too seriously.
- 11. Global warming will not result in:**
- A. Melting of the ice caps
 - B. Increasing sea levels
 - C. Increasing the size of the hole in the ozone layer
 - D. Unpredictable climate patterns
- 12. Which of these was an attempt by world governments to specifically address the problem of global warming.**
- A. The CITES Treaty
 - B. The Kyoto Agreement
 - C. The Geneva Convention
 - D. Agenda 21
- 13. The balance of carbon dioxide and oxygen has been upset by:**
- A. Excessive burning of fossil fuels
 - B. Large scale deforestation
 - C. Burning fossil fuels and deforestation
 - D. Increasing human population
- 14. Deforestation is responsible for:**
- A. Desertification
 - B. Eutrophication
 - C. Diversification
 - D. Salinisation
- 15. The ozone layer found high in the stratosphere:**
- A. Protects against the sun's harmful UV rays
 - B. Can react with atmospheric pollutants to form smog
 - C. Is toxic to plants
 - D. Is capable of disintegrating fabric and rubber
- 16. Holes in the ozone layer are thought to have been caused by**
- A. Space exploration
 - B. CFC's
 - C. Methane
 - D. Carbon dioxide